

# PLUGGED IN!

A Publication of Niagara Peninsula Energy Inc.

April, 2009  
Volume 1, Issue 3

## NIAGARA PENINSULA ENERGY INC.

### AN INTRODUCTION OF THE BOARD OF DIRECTORS

Niagara Peninsula Energy Inc. has been busy this past winter with our renovations at our head office in Niagara Falls and with the building of our new service centre in Smithville which is slated to open this late summer. My sincere thanks to our Board of Directors who provide the guidance and support of these projects for the betterment of the organization.: Janie Palmer, Wayne Campbell, Brian Walker, Russell Lowden, Wayne Thomson, George Mitges, Peter Wicks and Carolynn Ioannoni. In this issue of PLUGGED IN and future issues, we will be featuring these dedicated individuals who provide stewardship of Niagara Peninsula Energy Inc. and add to the long-term success of the Corporation.



**Janie Palmer, Chair  
Niagara Peninsula Energy Inc.**

Janie Palmer has been Chair of the Board of Directors of Niagara Peninsula Energy since 2008. Janie is the owner and operator of J. P. Marketing & Event Planning, the company she launched after leaving the United Way of Niagara Falls after serving as Executive Director for 12 years. She also worked for the City of Niagara Falls as an Economic Development Officer and, prior to that, in the Corporate Development offices of a major tourist destination. Janie has always enjoyed being involved with various community organizations.



**Russell Lowden, Board Member  
Niagara Peninsula Energy Inc.**

Russell Lowden was appointed to the newly formed Board of Directors of Niagara Peninsula Energy Inc. since 2008. Prior to his appointment to the Board, Russell is a past director of PenWest Utilities and PenWest Power. Russell is a licenced gas fitter and licenced electrician. He presently works for Westbrook Greenhouse Systems Ltd. as the Manager of the Electrical Department which oversees 6 different facilities for the organization. A native to the Smithville area, Russell was born and raised on a farm and is very much involved in his Community as a Volunteer. Russell has been a director on the Smithville Fair Board for over 30 years. Russell Chaired the Building and Grounds Project for his church. Russell resides in Caistor Centre area where he lives with his wife and four children.

# OUR NEW SERVICE CENTRE IS SHAPING UP

Construction has been brisk in Smithville as our new Service Centre is in its 3rd of 4 construction phases of the project.

This 24,700 square foot building will have approximately 7,500 square feet of office space. An inventory storage facility of 5,200 square feet and Truck Storage of 12,000 square feet.

This building will include a number of energy efficient features:

- Lighting Technology using T5 Fluorescent lights c/w Occupancy Sensors.
- Natural Lighting with the use of the Clerestor Design

- Natural lighting in the Truck Storage with the use of skylights
  - The building envelope was designed to include insulation in the wall cavity and the roof, even in the garage area.
  - The windows are insulated double glazed units with Low E coating to reflect solar heat but permit light.
  - An aluminum sunscreen provides shading on the interior from the summer sun but permits winter sun to enter deep into the interior.
  - Hi performance mechanical systems for HVAC are using the highest level of Energy Star rating Products on the market today.
- Our service centre will be completely self-sustaining through the use of on-site emergency generation.
- The cost for this new service centre is projected at \$4.5 million dollars with a scheduled completion in late summer 2009.

**“THIS STATE OF ART FACILITY WILL BE COMPLETELY SELF-SUSTAINING THROUGH THE USE OF ON-SITE EMERGENCY GENERATION”**



**FRONT ENTRANCE OF THE  
SERVICE CENTRE**



**FRONT RECEPTION AREA  
OF SERVICE CENTRE**

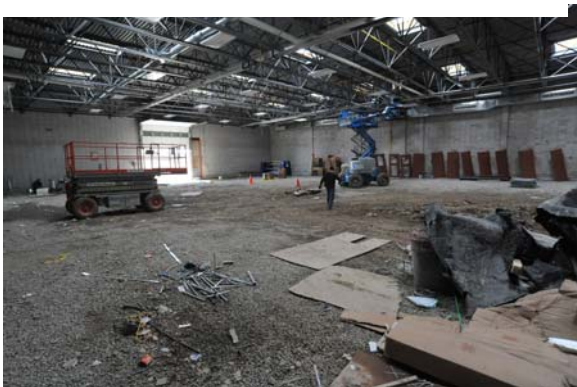
# MORE PHOTOS



**OFFICE SPACE**



**MEZZANINE SPACE**



**TRUCK STORAGE AREA**



**INVENTORY CONTROL STORAGE**



**RIBBON CUTTING OF THIS NEW FACILITY  
WILL TAKE PLACE IN LATE SUMMER OR  
EARLY FALL OF 2009**

# CAPITAL PROJECTS FOR 2009

(UPCOMING PROJECTS FOR THE LINCOLN, WEST LINCOLN,  
PELHAM AND NIAGARA FALLS AREA'S)

## **Caistor voltage conversion phase 4.**

(16.0 kV voltage upgrade to Caistor Center for load growth and reliability improvements)

## **Durham voltage conversion phase 4.**

(276.6 kV voltage upgrade to eliminate aging Durham 8.32 kV municipal station)

## **Fonthill Pelham St. MS Rebuild**

(Reconstruction of 27.6 / 4.16 kV Municipal Station for reliability and contingency capabilities)

## **Smithville F4 Voltage Conversion phase 2.**

(completion of rebuild and conversion)

## **Cherry Ave Line Extension**

(Overhead circuit build along Cherry from Younger for the removal of inaccessible line)

## **Pole Replacement Program—Lincoln & West Lincoln Areas**

(replacement of deteriorated wood distribution poles)

## **Garner Road and Lundy's Lane line construction**

(new and upgraded distribution lines for area load growth)

## **Woodland Avenue N. and S. of High St.**

(reconstruction of aging 4.16 kV plant and prep for future voltage upgrade)

## **Distribution plant east and west of Dorchester Rd at Dianne and Cherrygrove**

(re-enforcement of existing distribution plant on Dorchester and reconstruction of 4.16 kV plant on Dianne and Cherrygrove for voltage upgrade)

## **Pole Replacement Program—Niagara Falls**

(replacement of deteriorated wood distribution poles)

## **Stanley Avenue 3 phase OH build**

(completion of OH rebuild of line from Portage Road north to Hwy 405)

*A Publication of Niagara Peninsula Energy Inc.*

7447 Pin Oak Drive

Niagara Falls, ON L2E 6S9

Toll Free—1-877-270-3938

E-mail: [info@npei.ca](mailto:info@npei.ca) or visit us at [www.npei.ca](http://www.npei.ca)